



May 12 – 15

SCIENCE WEEK 2026

Programme

Social media hashtags



#RigaNordicUniversity

#RNUScienceWeek

#RNU

Wi-Fi

RNU

name:

RNU

psw:

ANNO1994

BBH

name:

psw:

Mežaparks

name:

mezaparks_public

psw:

Mezaparks23

[Photo Gallery](#)



Welcome message from Riga Nordic University

Dear distinguished guests, dear colleagues, researchers, partners, and friends,

On behalf of Riga Nordic University, it is a great pleasure to warmly welcome you to our event.

Critical infrastructures and digital systems support the everyday functioning of our societies. Their safety, reliability, adaptability, and recoverability are essential for sustainable development, public trust, and security. Therefore, multidisciplinary approaches are vital. Engineering, information technologies, data science, risk analysis, human factors, organisational studies, policy, and education must work together to strengthen the resilience of complex socio-technical systems.

We are honoured to host this important international gathering in Latvia and to welcome participants representing a wide range of countries (Latvia, Uzbekistan, France, Italy, Ukraine, Poland, Germany, the Czech Republic, Finland, Spain, the United Kingdom, Romania, and Lithuania), institutions, disciplines, and professional backgrounds. Your presence reflects the growing importance of international cooperation in addressing the complex challenges faced by modern societies, critical infrastructures, and digital systems.

Riga Nordic University is proud to provide a space where these perspectives can meet. We believe that universities have a special responsibility not only to generate knowledge but also to connect researchers, practitioners, industry representatives, public authorities, and students in order to transform knowledge into practical impact. During this event, we encourage you to share ideas openly, build new partnerships, and reflect on how research and innovation can contribute to safer, smarter, and more resilient societies. We also hope that your time in Riga and Latvia will be both productive and inspiring.

We would like to express our sincere gratitude to ESReDA, keynote speakers, authors, reviewers, partners, and all participants who have contributed to making this event possible.

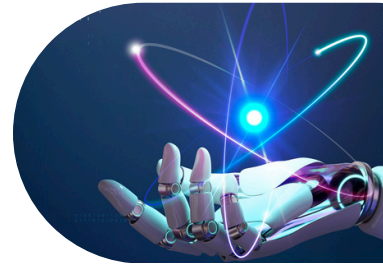
Once again, welcome to Riga Nordic University. We wish you a successful event, fruitful discussions, and lasting professional connections.


Thank you.

RNU SCIENCE WEEK 2026

12
MAY

ARRIVAL DAY



 *RNU Campus, **ROOM 306***
1 Valērijas Seiles street, building 5, Riga

13
MAY

| | |
|----------------------|--|
| 13:00 - 17:30 | ESReDA Seminar, Day 0 |
| 13:00 - 14:30 | Transfer, arrival at RNU premises <i>R. Djakons J.</i> |
| 13:00 - 14:30 | A tour of the facilities <i>M. Celika</i> |
| 15:00 - 15:30 | Coffee Break |
| 13:00 - 14:30 | Esreda Board of Directors meeting and project group sessions <i>ESReDA, L. Zemite, D. Djakons, A. Bondarenko</i> |
| 17:00 - 17:30 | Group photo, Refreshments |
| 19:00 - 21:00 | Welcome Dinner |

Wi-Fi

RNU
ANNO1994

13
MAY

END OF COMMUNITY & CAPACITY BUILDING DAY



Wi-Fi

RNU
ANNO1994

14
MAY

SCIENCE DAY

(Main Conference)

📍 *Baltic Beach Hotel,
23/25 Jūras street, Jūrmala*

9:30 - 10:00

Registration and Morning Coffee

Location: Conference Room I

10:00 - 12:00

Opening and Keynote Session

Chair: J. Dimants

10:00 - 10:10

Welcome Words

D. Djakons, M. Eid, O. Niemi, L. Zemite

10:10 - 10:15

Greeting from the Ambassador of Uzbekistan in Latvia

Rakhmanov Timur Yusupovich

10:15 - 10:20

Video Greeting from the Ambassador of Latvia in Uzbekistan

Girts Jaunzems

10:20 - 10:30

Welcome Words from the Ministry of Economics

Jurgis Miežainis, Parliamentary Secretary

10:30 - 10:40

Group photo

10:40 - 11:00

**Climate change and energy transition:
resilience and drive for the development**

*Olga Bogdanova, The Ministry of Climate and Energy,
Word Energy Council, University of Latvia*

11:00 - 11:30

Computer vision applications: opportunities and the challenges of AI algorithms

Heikki Kalviainen, LUT University, Finland

11:30 - 11:50

Renewable role in sustainability and resilience

Gatis Galviņš, Latvian Wind Association

11:50 - 12:10

Resilience of electricity systems: research for policy support

*Vytis Kopustinskas, No. 18, European Commission Joint
Research Centre*

12:10 - 13:00

Lunch Break at BBH

Wi-Fi

14
MAY

Location: Conference Room I

13:00 - 15:00

Safety and Reliability Session

Chair: L. Zemite

13:00 - 13:20

Challenges in Resilience Modelling to Support Supply Continuity and Disaster Management Decision Making

Mohamed Eid

13:20 - 13:40

A Hybrid simulation-Optimisation Framework for Decision Support in Railway Disruption Management

Tan Kang Rui, No. 4

13:40 - 14:00

SIMEX: A PyPSA-Based Application Tool for Enhanced Tabletop Exercises on Energy Infrastructure Resilience

Federico Ferretti, No. 9

14:00 - 14:20

Probabilistic Characterisation of Fatigue Lifetime of Ageing Infrastructures

Julien Baroth, No. 10

14:20 - 14:40

Comparative Analysis of Wheel Odometry and the SLGCM Neural Ego-Motion Model for Maze Navigation by a Small Mobile Robo

Rodions Saltanovs, No. 21

14:40 - 15:00

IntEneRes approach to evaluation and improvement of resilience of integrated multi-energy systems

Ivars Zalitis, No. 32

15:00 - 15:30

Coffee Break at BBH

Wi-Fi

14
MAY

Location: Conference Room I, online

15:30 - 18:30

Energy, Security, and Governance Session

Chair: A. Bondarenko

15:30 - 15:45

Simulation-Based Multi-Criteria Assessment of Access Control Architectures for Small Educational Institutions

Natalia Zamorskaia, No. 44

15:45 - 16:00

High-Frequency Solar Resource Characterization

Andris Backurs, No. 12

16:00 - 16:15

From Safety Classification to Enhance Resilience: a Risk-Informed Approach for Research Reactors

Karol Kowal, No. 5, online

16:15 - 16:30

Methodological and management aspects of major accident prevention in case of NaTech lightning risks

Roberto Spampinato, No. 2, online

16:30 - 16:45

A Multi-Dimensional Composite Resilience Index for Ukrainian Public Administration Under Conflict Conditions

Volodymyr Momot, No. 31

16:45 - 17:00

Rapid Evolution of Agentic AI: From Framework Labels to Control Surfaces

Andrey Bondarenko, No. 57

17:00 - 17:15

Adaptive Multi-Band DMR-Based System for Data Transmission in Civil Defense Monitoring and Alerting

Rodions Saltanovs, No. 20

17:15 - 17:30

Procedural justice, trust, and renewable energy-related conflicts in Latvia

Olafs Slutins, No. 19

18:00 - 18:30

Rooted in place: approaches to building resilient entrepreneurial ecosystems across space and time

Kathleen Burke,

University at Buffalo School of Management

19:00 - 22:00

Gala Diner at BBH

Wi-Fi

14
MAY



ESReDA

European Safety, Reliability &
Data Association

Location: Conference Room III

15:30 - 17:30 **ESReDA project development discussions**

Wi-Fi



14
MAY

END OF SCIENCE DAY



Wi-Fi

15
MAY

COOPERATION & IMPACT DAY

📍 *Mežaparks,
Kokara stage: Ostas prospekts 11,
Riga*

| | |
|---------------|---|
| 09:30 - 10:30 | Transfer under request |
| 10:30 - 11:00 | Registration and Morning Coffee |
| 11:00 - 12:00 | Cooperation Session <i>Chair: J. Dimants</i> |
| 11:00 - 11:30 | Understanding ICT standards and standardisation <i>Iveta Mezinska</i> <i>The Latvian national standardisation body</i> |
| 11:30 - 12:00 | Standardisation for emerging technologies <i>Bettina Funk</i> <i>ETSI</i> |
| 12:00 - 13:00 | Guest Universities presentations <i>Tashkent State University of Economics</i> <i>Central Asian Medical University</i> <i>Kokand University</i> <i>Fergana State University</i> <i>Renaissance University</i> |
| 13:00 - 14:30 | Lunch |
| 14:30 - 15:30 | Award Ceremony |
| 15:30 - 16:30 | Concert |
| 16:30 - 17:30 | Guided Tour |

Wi-Fi



Mežaparks,
Seminar Hall, 2nd Floor

15
MAY

| | |
|---------------|---|
| 09:30 - 10:30 | Transfer under request |
| 10:30 - 11:00 | Registration and Morning Coffee |
| 11:00 - 13:00 | ESReDA General assembly and Safety Session <i>Chair: V. Kopustinskas</i> |
| 11:00 - 11:20 | Karolis Lašas, No. 13 <i>Resilience-Oriented Optimization of District Heating Systems Using Thermal-Hydraulic Simulation</i> |
| 11:20 - 11:40 | Daniel Hofmann, No. 15 <i>Assessing hybrid threats to critical infrastructure through morphological analysis and escalation phases</i> |
| 11:40 - 12:00 | David J. Castro Rodriguez, No.11 <i>Multi-Risk and Metric-Based Approach as a First-Tier Evaluation of NaTech Potential for Resilience Assessment in Process Industries</i> |
| 12:00 - 13:00 | ESReDA General Assembly |
| 13:00 - 14:30 | Lunch |
| 14:30 - 15:30 | Award Ceremony |
| 15:30 - 16:30 | Concert |
| 16:30 - 17:30 | Guided Tour |

Wi-Fi

